



+ collection





Proudly made in Britain since 1972



# Commodore Design

“

Since 1972, Commodore Design have been designing, manufacturing and installing the highest quality UK kitchens to the contract market in London and the Southeast-to date, we have designed, made and installed 312, 000 contract kitchens.

This expertise is all under one roof; design, marketing, sales, manufacturing, and customer care, so you know you are not only buying a kitchen of the highest quality and integrity, but also one that has been entirely made at our factory here in the UK. This allows us to give you, our client, a totally bespoke offering for your project, whether that is for five plots, or five hundred plots. This flexibility, combined with a consistency of delivery, has ensured that we have a hard-earned reputation as the leader in our field.

**Since our inception, we have been at the forefront of innovation and design. We are always looking forward to the next big thing in trends, colour, textures and of course, environmental consideration. As we turn 50 years old, we will continue looking to the future and how we can help you present something to your customers that will excite them and create a real differential between you and others in the market.**

**The next 50 years of our journey starts with what you will see on the following pages, and we are proud to present this to you as our 2022 product range.**

”

# Collection overview

---



## Harter +

price group 0  
18mm melamine faced door  
with matching 1mm edge



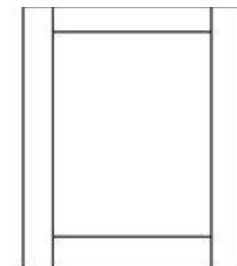
## Moel +

price group 1  
18mm melamine faced wood grain effect  
door with matching 1mm edge



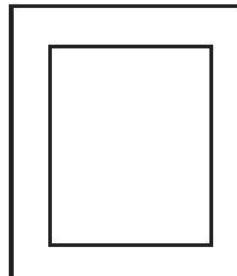
## Moncreiffe +

price group 2  
18mm superior textured melamine faced  
woodgrain door with matching 1mm edge



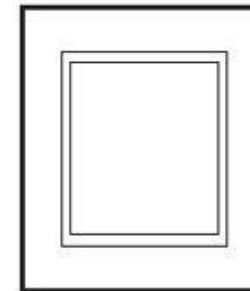
## Kentmere +

price group 2  
shaker style frontage  
19mm thick with 68mm wide frame  
smooth matt foil



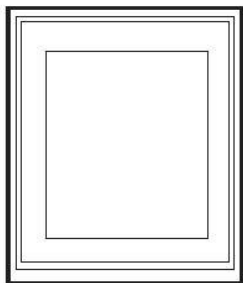
## Lomond +

price group 5  
22mm matt lacquered MDF shaker  
style door  
frame widths 80, 50, 20, 10mm



## Etive +

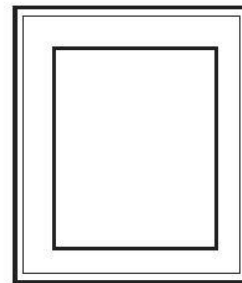
price group 5  
22mm matt lacquered MDF shaker style  
door double step centre detail



## Fairfield+

price group 5

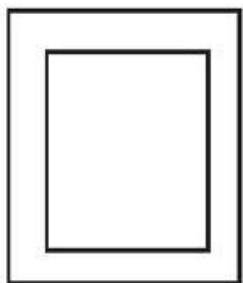
22mm matt lacquered MDF door  
featuring a thin frame and bevelled  
edges



## Hambleton

price group 5

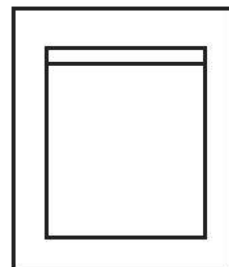
22mm matt lacquered frontages  
thin frame and groove in frame effect  
RAL match available



## Snowden

price group 4

18mm shaker style frontages  
87mm wide frame  
smooth matt painted finish  
RAL match available



## Storr

price group POA

22mm matt lacquered shaker frontages  
frame width 80mm  
RAL match available

---





our + world...



# Harter+

Price group 0

18mm melamine faced slab door with co-ordinating 1mm edge

Available with both handles and handleless systems

Clad panels available

- |                  |                                |                |
|------------------|--------------------------------|----------------|
| 1. Stone Grey    | 7. Anthracite Finline Metallic | 13. White Grey |
| 2. Indigo Blue   | 8. Anthracite Metal Fabric     | 14. Pearl Grey |
| 3. Monument Grey | 9. Carbon Grey                 | 15. Onyx Grey  |
| 4. White Levanto | 10. Sage Green                 | 16. Fir Green  |
| 5. Reed Green    | 11. Denim Blue                 |                |
| 6. Smoke Blue    | 12. Soft Black                 |                |





# Moel+

---

## Price group 1

18mm melamine faced slab door with co-ordinating 1mm edge

Available with both handles and handleless systems

Clad panels available

Vertical grain

---

1. Beige Grey Lorenzo Oak

2. Graphite Denver Oak

3. Natural Kendal Oak

4. Vintage Santa Fe Oak

5. Grey Brown Whiteriver Oak

6. Tobacco Pacific Walnut

7. Grey Rift Oak

8. Grey Brown Urban Pine







# Moncreiffe+

---

Price group 2

18mm melamine superior quality deep skin textured woodgrain slab door with co-ordinating 1mm edge

Available with both handles and handleless systems

Clad panels available

Vertical grain

---

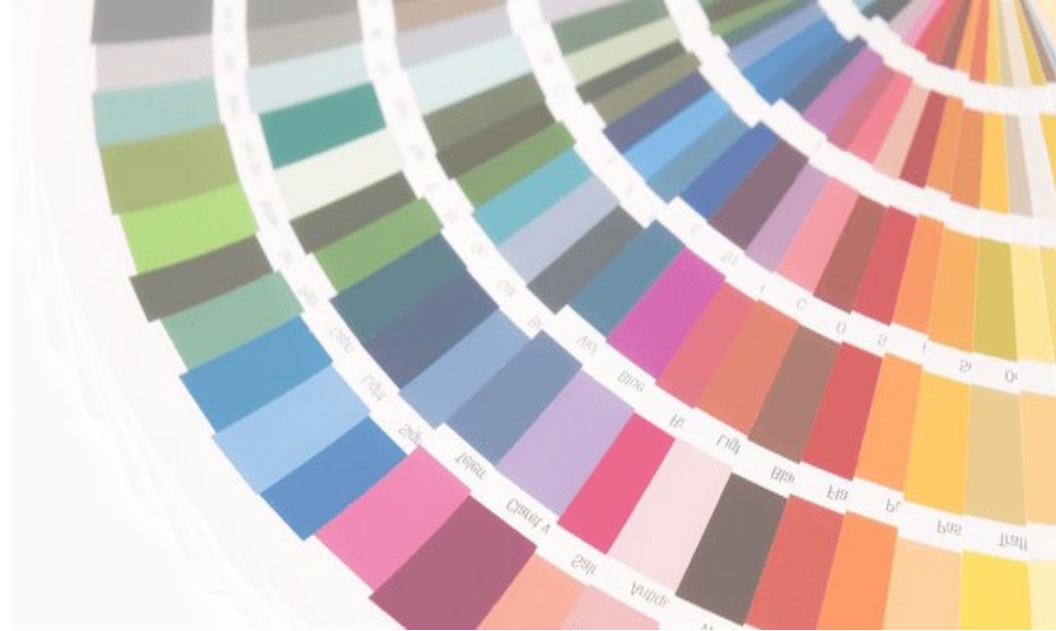
- |                             |                           |
|-----------------------------|---------------------------|
| 1. Brown Orleans            | 7. Dark Brown Garrone Oak |
| 2. Black Glazed Halifax Oak | 8. Smoked Riffian Oak     |
| 3. Natural Anthor Oak       | 9. Brown Halifax Oak      |
| 4. Pasadena Pine            |                           |
| 5. White Halifax Oak        |                           |
| 6. White Mountain Larch     |                           |







# Kentmere+



---

Price group 2

19mm thick smooth matt foil shaker style door with 68mm wide V-groove joint frame

Available with handle option only

Clad panels available

RAL Match



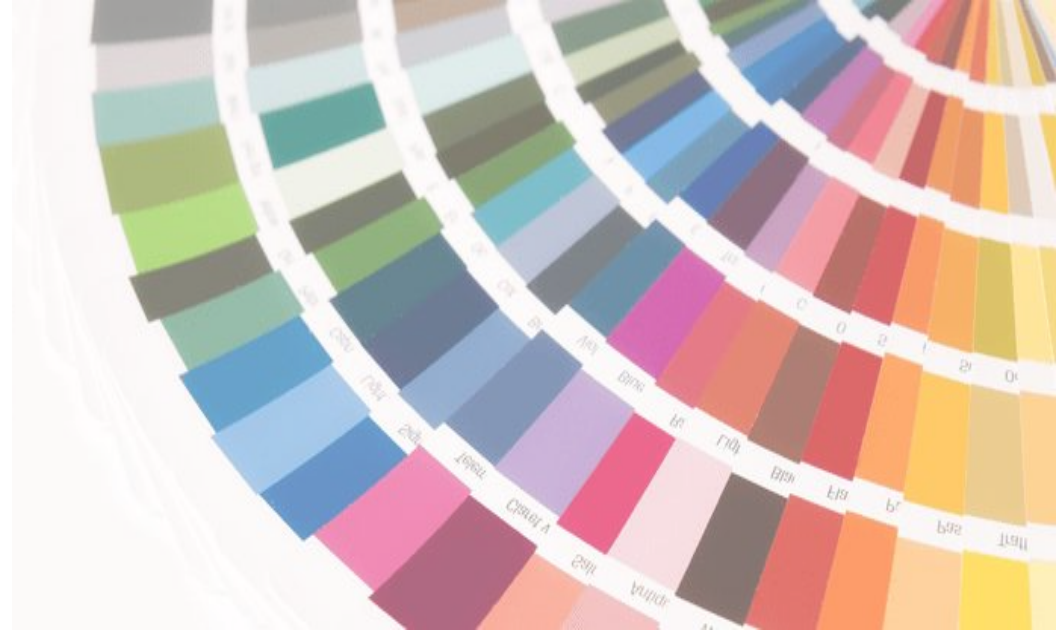
Little Greene®  
— PAINT & PAPER —

PAINT & PAPER  
LIBRARY  
LONDON

RAL  
COLOURS



# Lomond+



---

Price group 5

22mm matt lacquered MDF shaker style door with a choice of frame widths;

80, 50, 20, 10mm

Clad panels available

RAL colour match

---



Little Greene®  
— PAINT & PAPER —

PAINT & PAPER  
LIBRARY  
LONDON

RAL  
COLOURS





# Etive+



---

Price group 5

22mm matt lacquered MDF shaker style door with a double step centre detail

Available with handle option only

Clad panels available

RAL colour match

---



Little Greene®  
— PAINT & PAPER —

PAINT & PAPER  
LIBRARY  
LONDON

RAL  
COLOURS





# Fairfield+



Price group 5

22mm matt lacquered MDF door featuring a thin frame and bevelled edges

Available with handle option only

RAL colour match



Little Greene®  
— PAINT & PAPER —

PAINT & PAPER  
LIBRARY  
LONDON

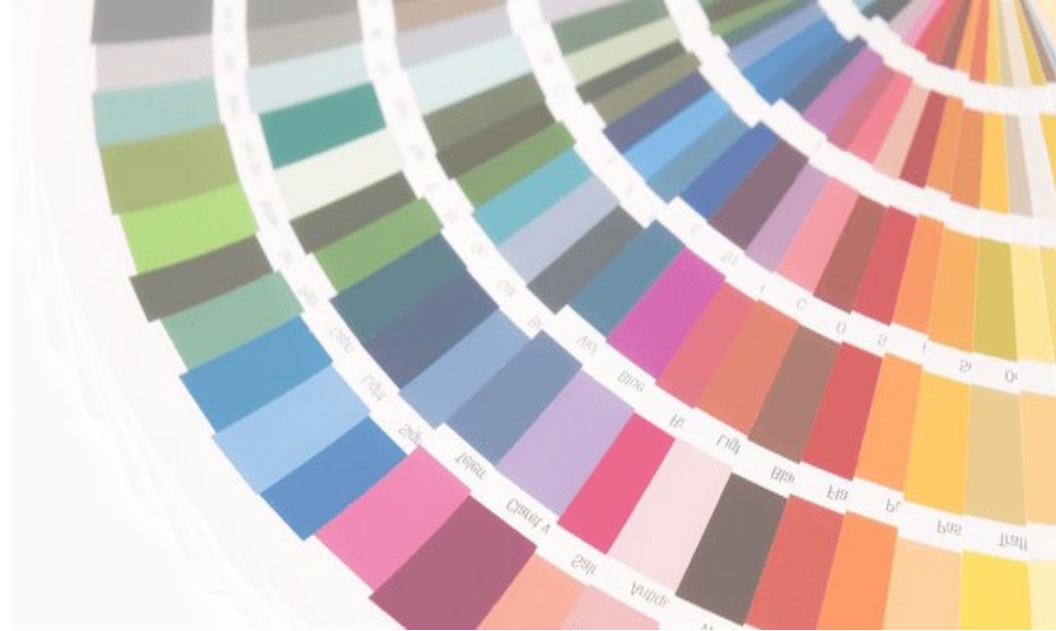
RAL  
COLOURS







# Hambleton



---

Price group 5

22mm matt lacquered MDF fronts featuring a thin frame and groove creating an in frame effect

Available in handle option only

This in frame look still maintains the benefit of standard interior cabinet space

RAL colour match

---

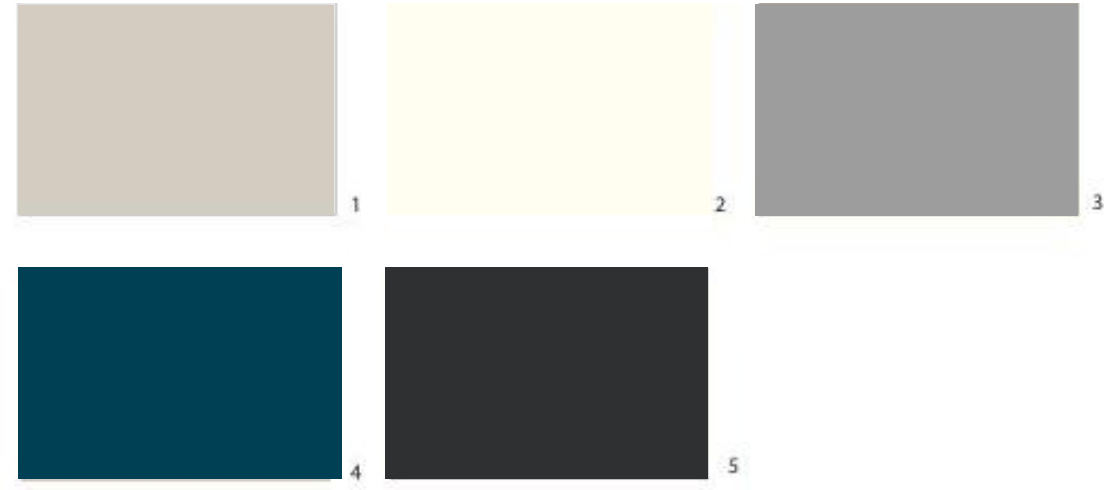


Little Greene®  
— PAINT & PAPER —





# Snowden



---

Price group 4

18mm thick shaker style with 87mm wide frame door

Smooth matt painted finish

Available in handle option only

RAL colour match \*surcharge

---

- 1. Light Grey
- 2. Porcelain
- 3. Dust Grey
- 4. Marine
- 5. Graphite



Little Greene  
— PAINT & PAPER —







# Storr



---

Price group POA

22mm matt lacquered handless shaker MDF fronts with frame width 80mm

Matching external carcass or cover end panels available

RAL colour match

---



Little Greene®  
— PAINT & PAPER —

PAINT & PAPER  
LIBRARY  
LONDON

RAL  
COLOURS

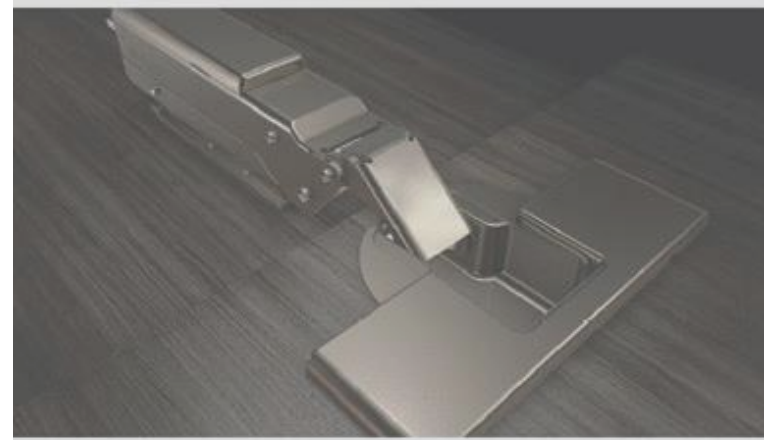


the + box...

# Plus+

## cabinet specification

- Factory assembled glued and doweled cabinetry.
- 18mm melamine faced (FSC rated) particle board.
- 8mm solid back.
- Integrated service void on all cabinetry.
- Blum metal clip on clip off soft close hinges in onyx
- Height adjustable legs to base and tall units.
- No unnecessary drill holes giving a engineered look.
- Clear plinth seals on all plinths.
- Self locking shelf support.







- |                  |                                |                        |
|------------------|--------------------------------|------------------------|
| 1. Stone Grey    | 7. Anthracite Finline Metallic | 13. White Grey         |
| 2. Indigo Blue   | 8. Grey Textile                | 14. Pearl Grey         |
| 3. Monument Grey | 9. Carbon Grey                 | 15. Onyx Grey          |
| 4. White Levanto | 10. Sage Green                 | 16. Fir Green          |
| 5. Reed Green    | 11. Denim Blue                 | 17. Beige Textile      |
| 6. Smoke Blue    | 12. Soft Black                 | 18. Anthracite Textile |



the mechanism...



# The ideal supplement

As compelling on the inside as it is on the outside.

Minimalism and understated elegance are the trends of our times. Vionaro continues the external elegance of pot drawer fronts through to the inside. Vionaro is a direct example of the attractive lightness that can be achieved with a material such as steel.

## “A statement”

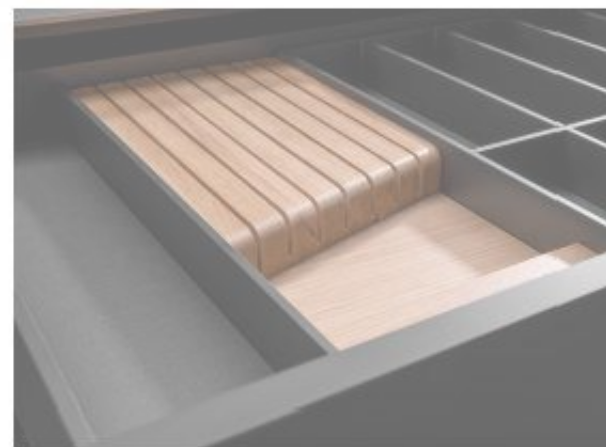
For exclusive interior design tastes. When opening the innovative Vionaro drawer system, you will see the incarnation of a vision of a movement system.

## “Minimalist, luxury visual design”

Created and designed in this awareness, Vionaro is destined to be the slender design classic of tomorrow.



G\*GRASS®



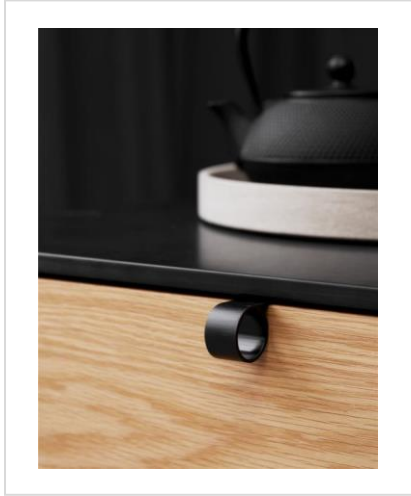
video



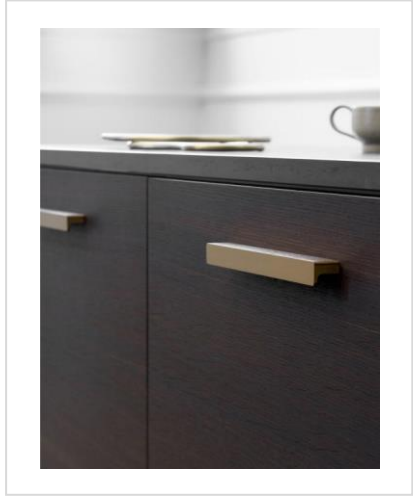


getting to grips...

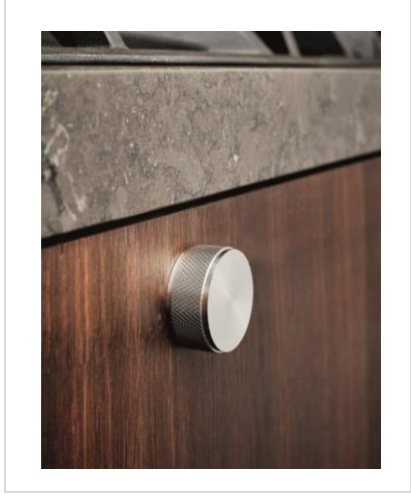
1. Tug available in inox look, matt black
2. Elan available in brushed brass, inox look, matt black
3. Harlequin available in silk polished, matt black
4. Knot available in silk polished, matt black
5. Chatsworth Knob available in chrome
6. Lounge available in leather black/silk polished
7. Manor back available in antique brass, matt black
8. Oval available in black, white
9. Port available in antique grey, antique brown, inox look, matt black
10. Regular available in silk polished, matt black



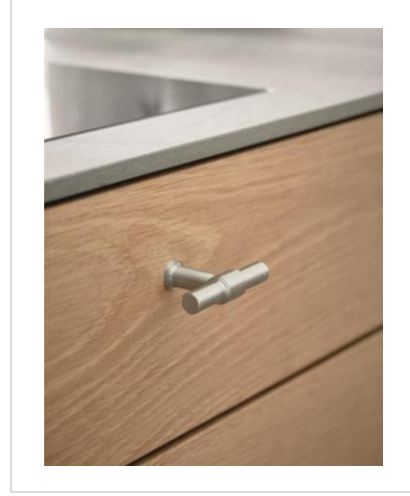
1



2



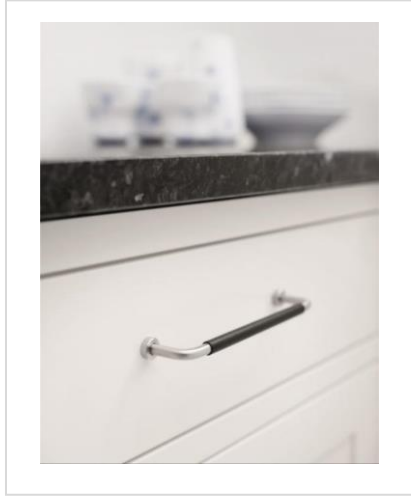
3



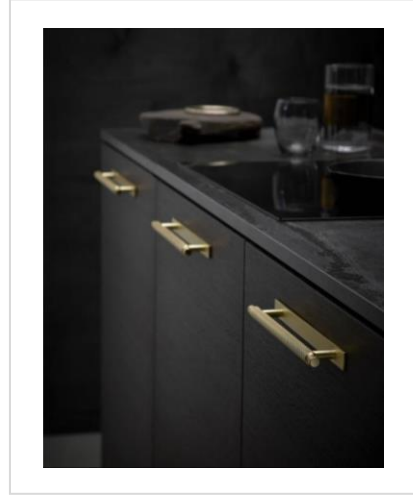
4



5



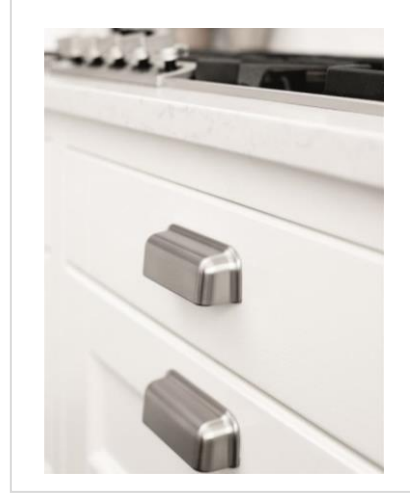
6



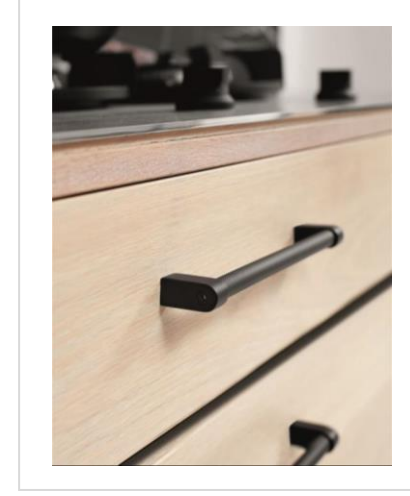
7



8

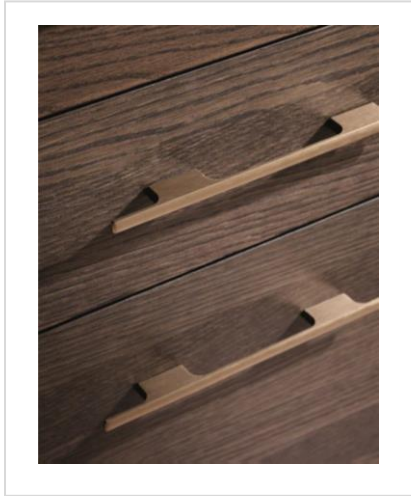


9

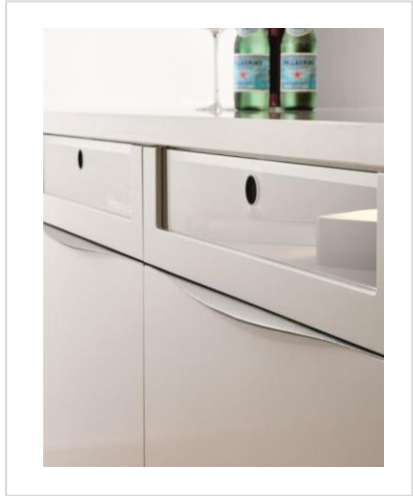


10

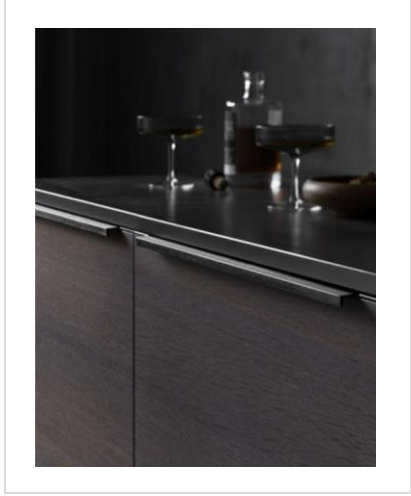
- 11. Tau available in brushed brass, inox look, matt black, anthracite
- 12. Torrance available in inox look
- 13. Trim available in inox look, antique bronze, black
- 14. Twirl available in brushed gold, inox look, brushed anthracite, matt black
- 15. Vista available in chrome, inox, anthracite
- 16. Wow available in chrome, inox look
- 17. Reeded bar available in stainless steel, brushed nickel, brass
- 18. Classic available in inox look
- 19. Motion available in matt black
- 20. Collingwood cup available in chrome



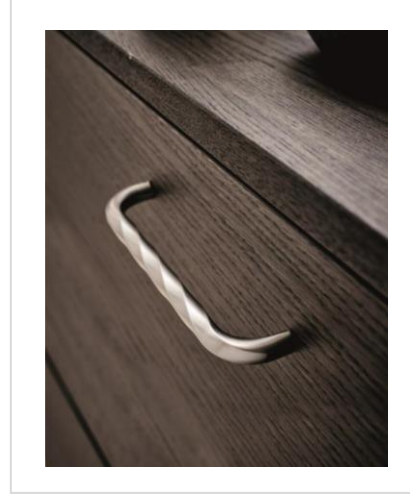
11



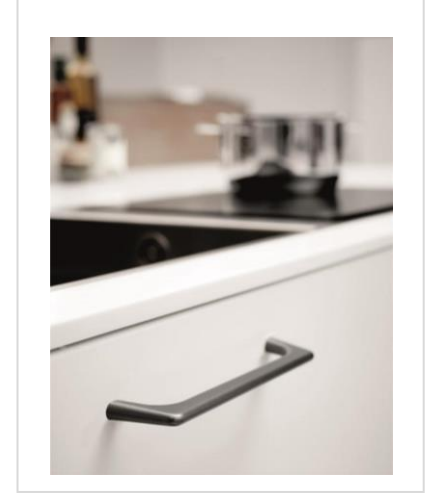
12



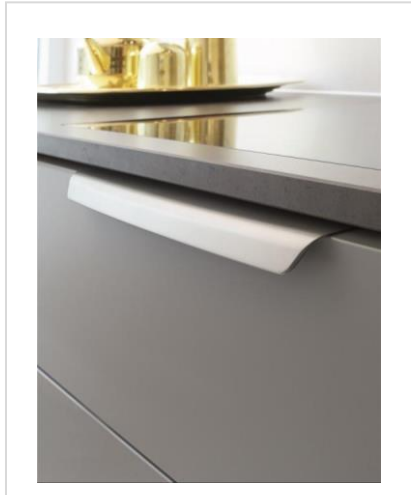
13



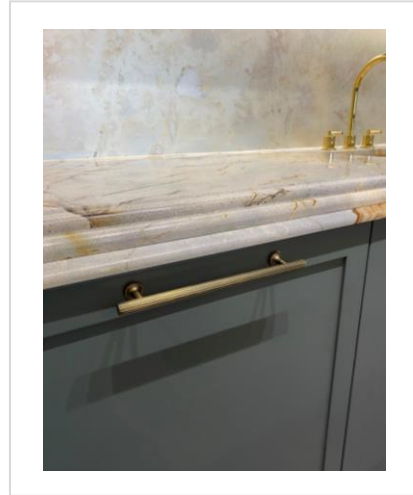
14



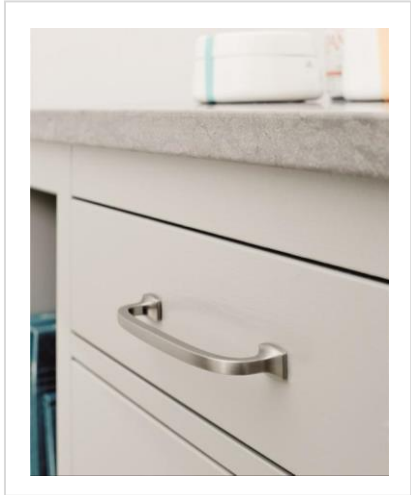
15



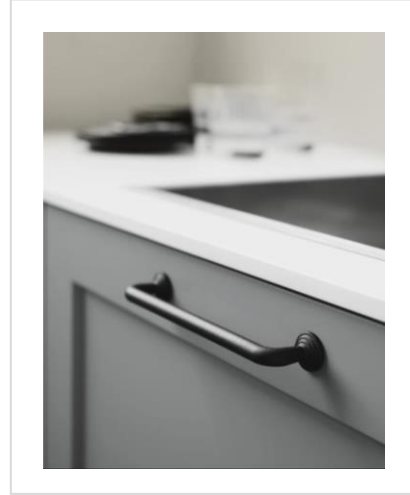
16



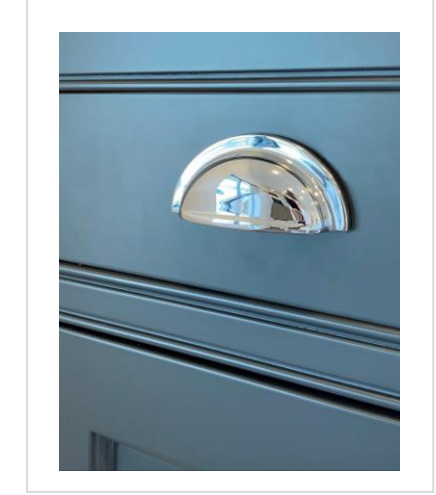
17



18



19



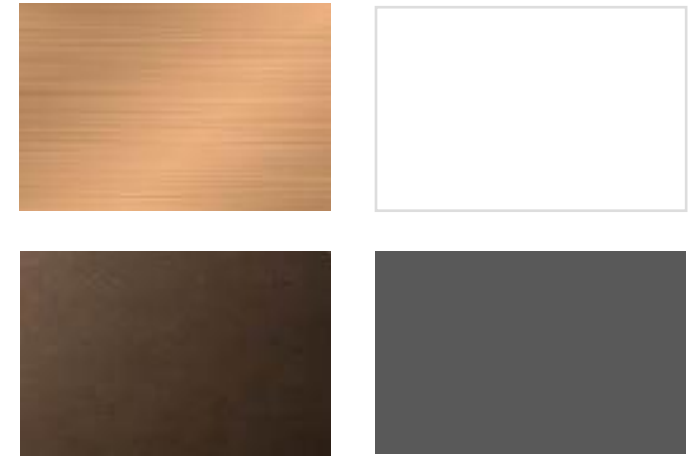
20





# Shadow+

## Handless system



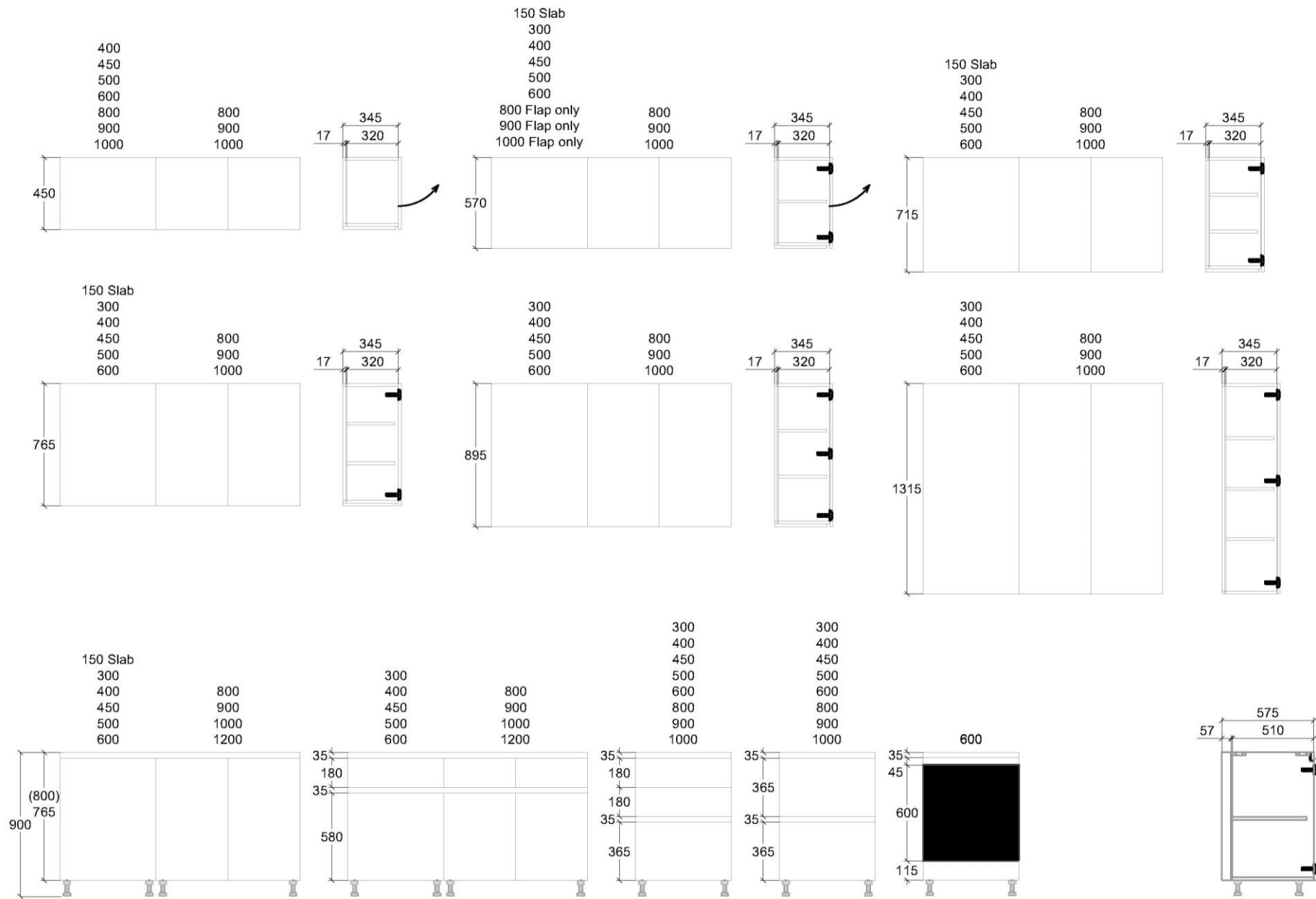
1. Brushed copper anodised
2. Matt white power coated
3. Bronze anodised
4. Graphite powder coated



the matrix...

# Low height

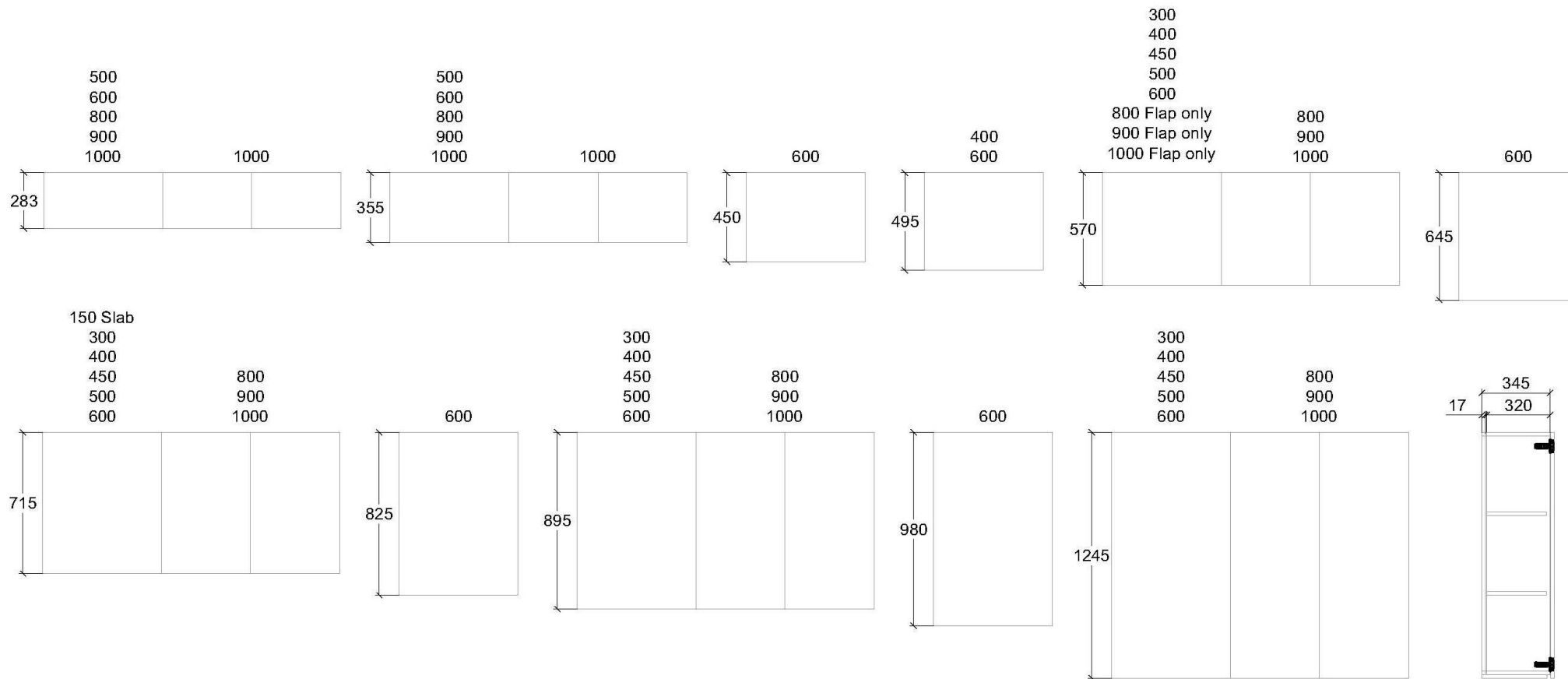
## Handless





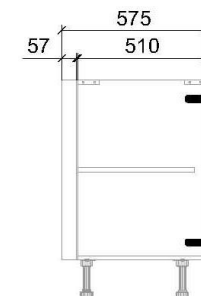
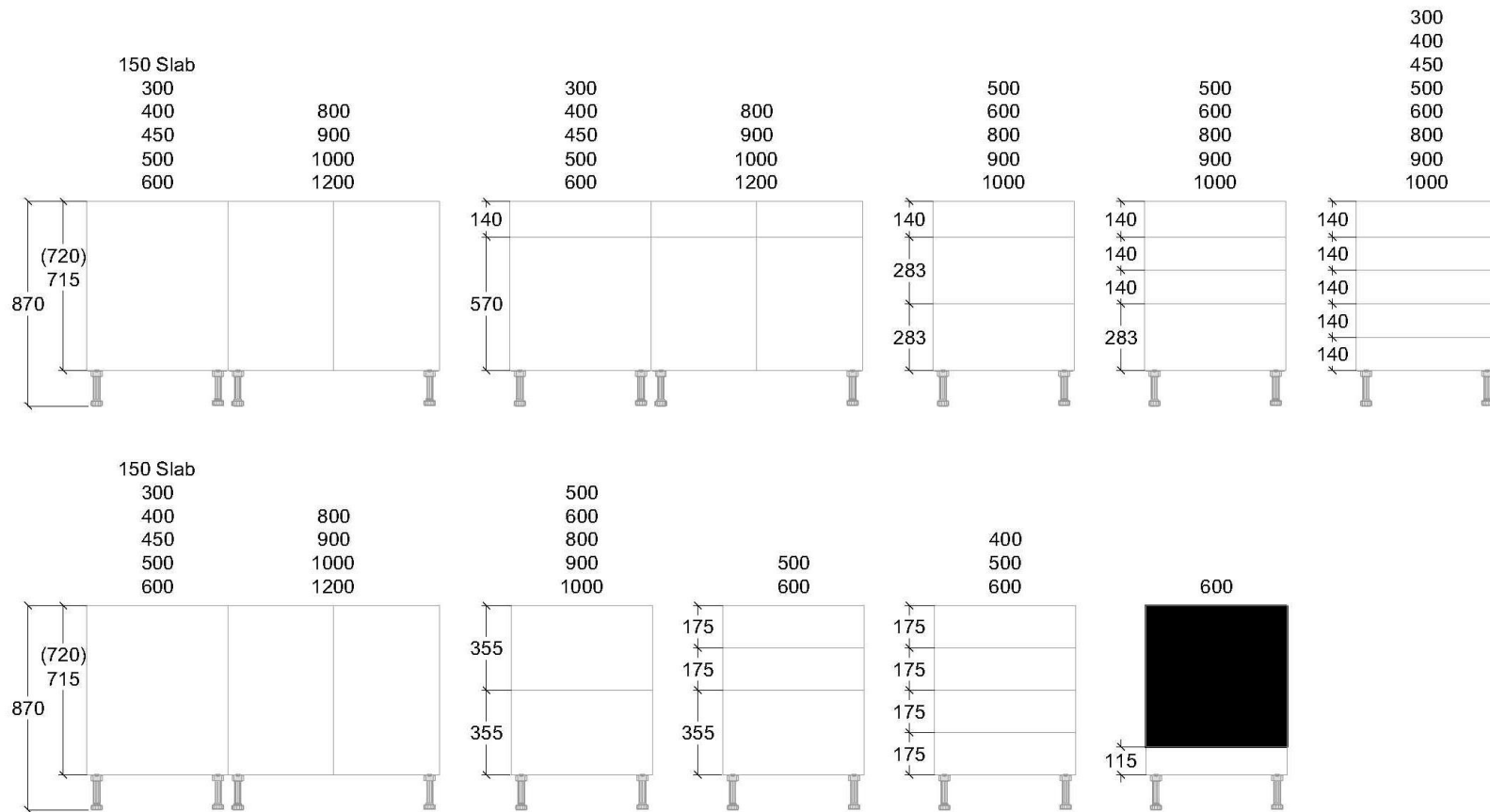
# Low height

## Standard handled



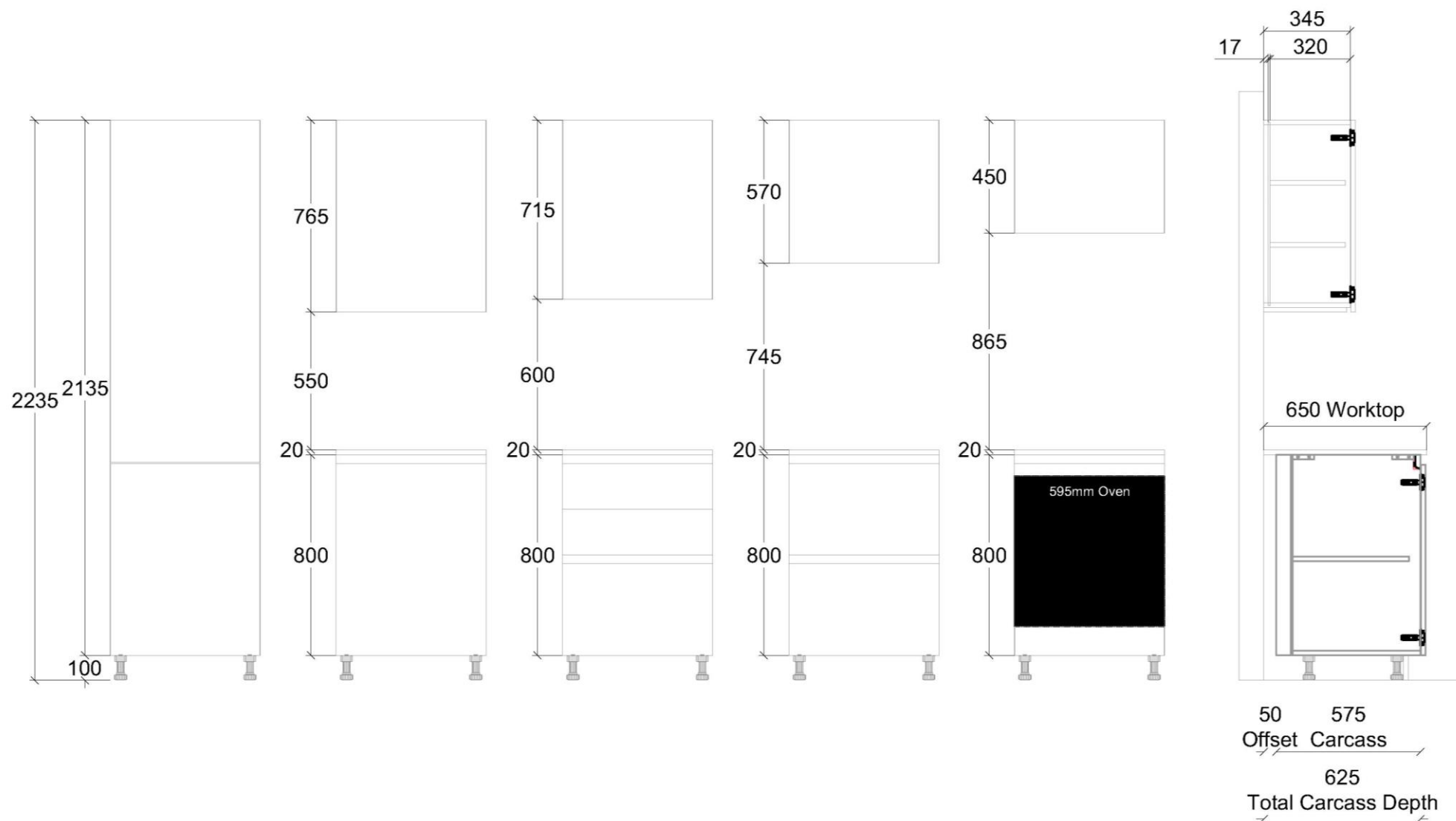
# Low height

## Standard handled



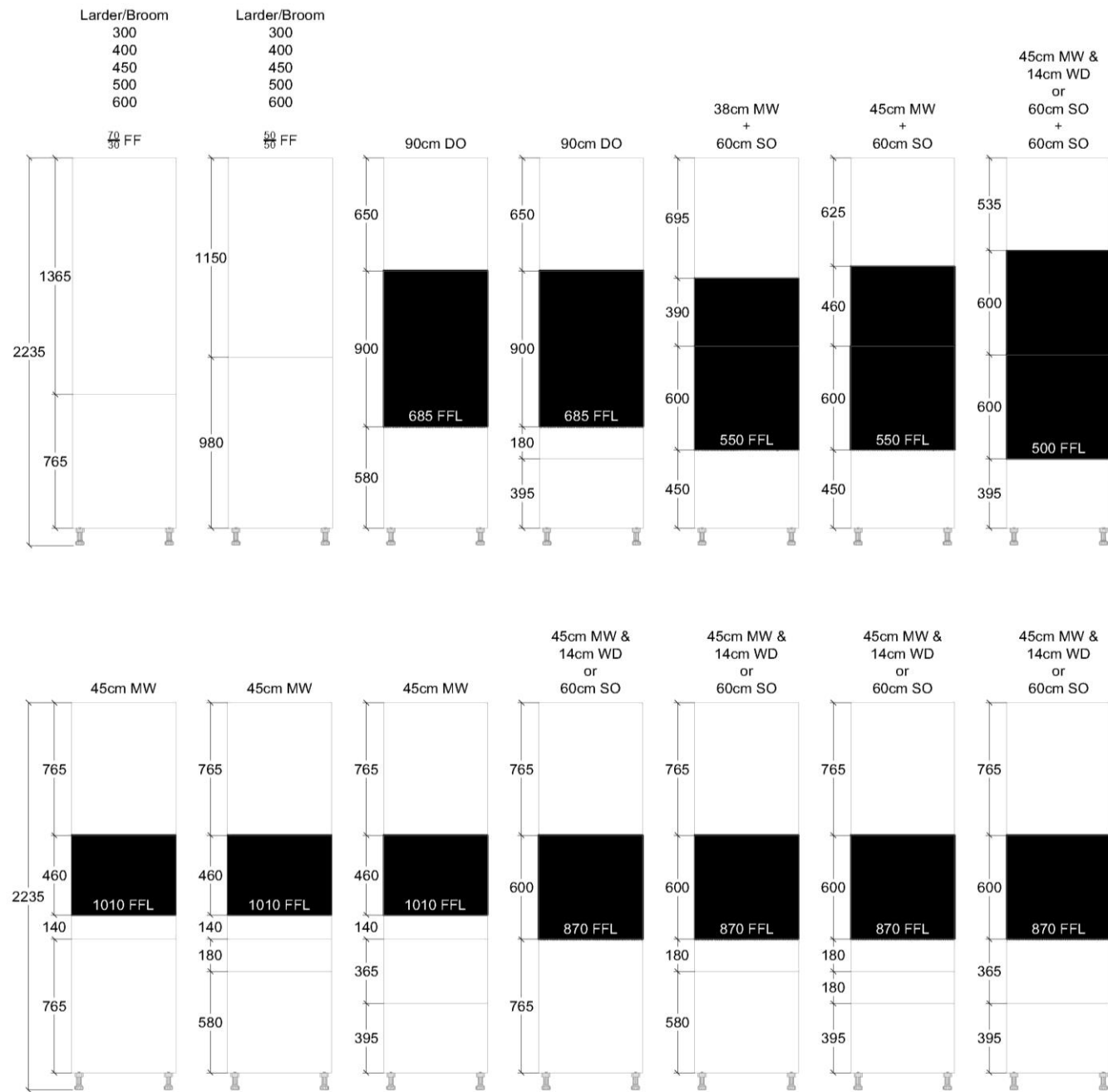
# Med height

## Handless



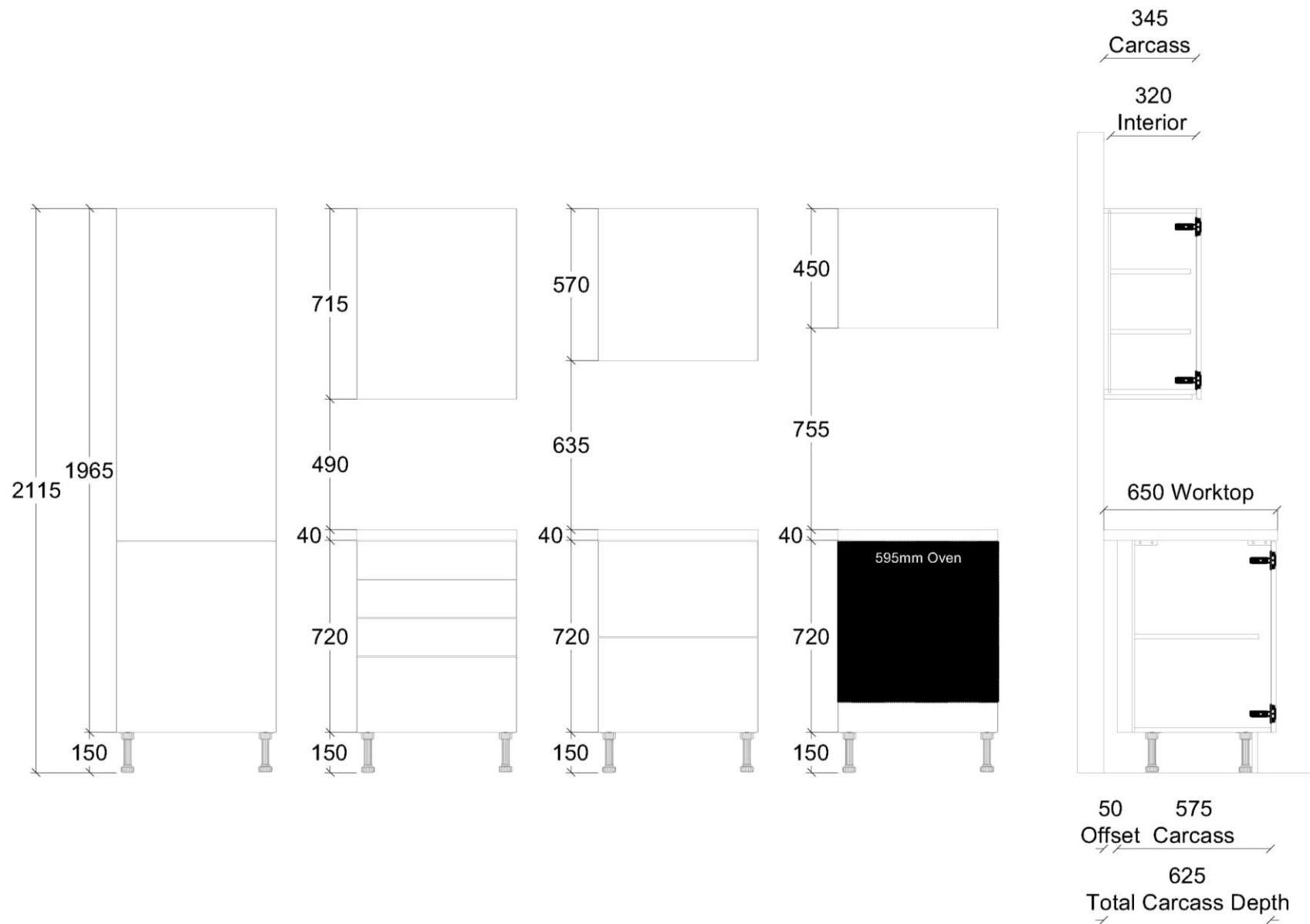
# Med height

## Handless



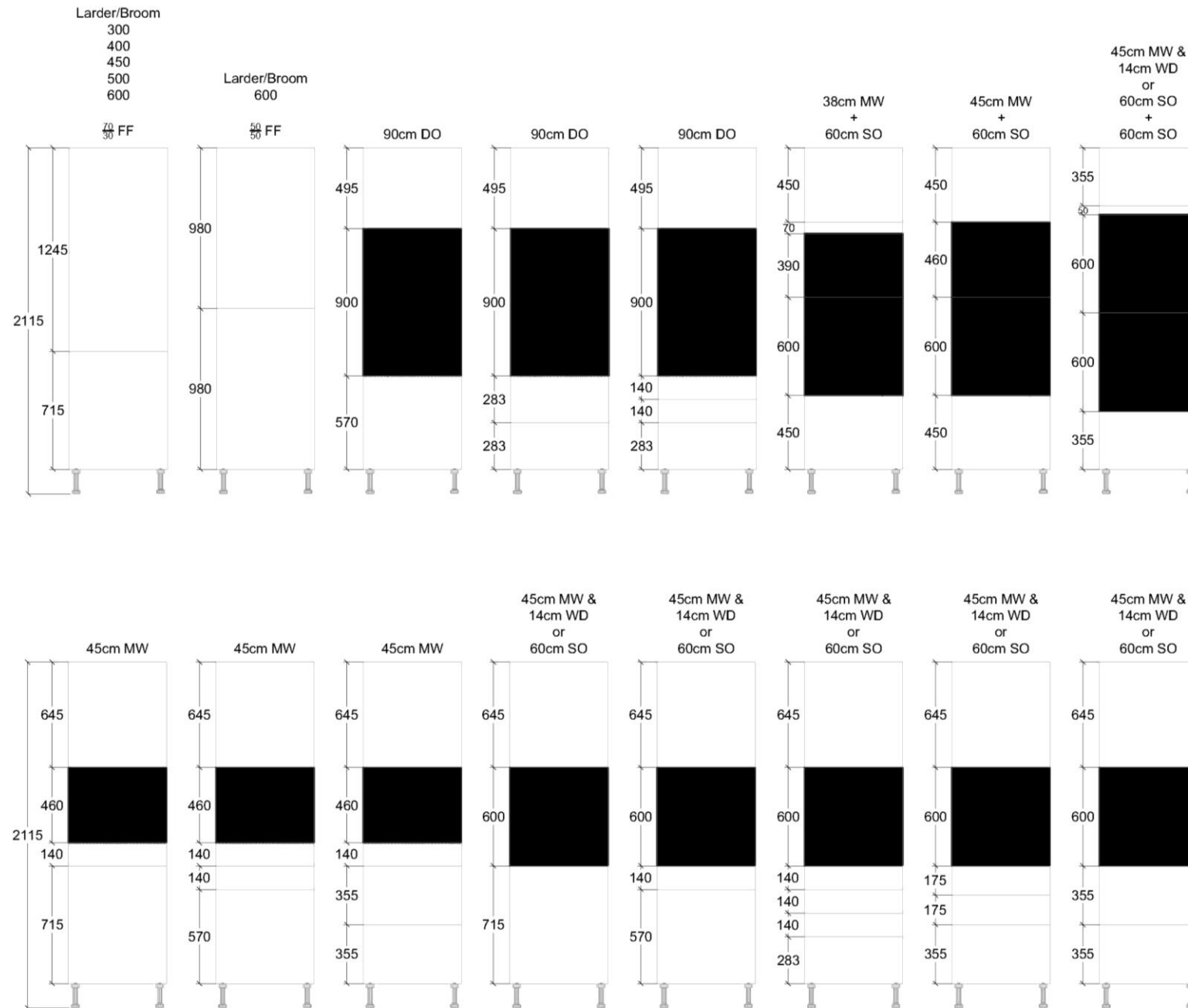
# Med height

## Standard handled



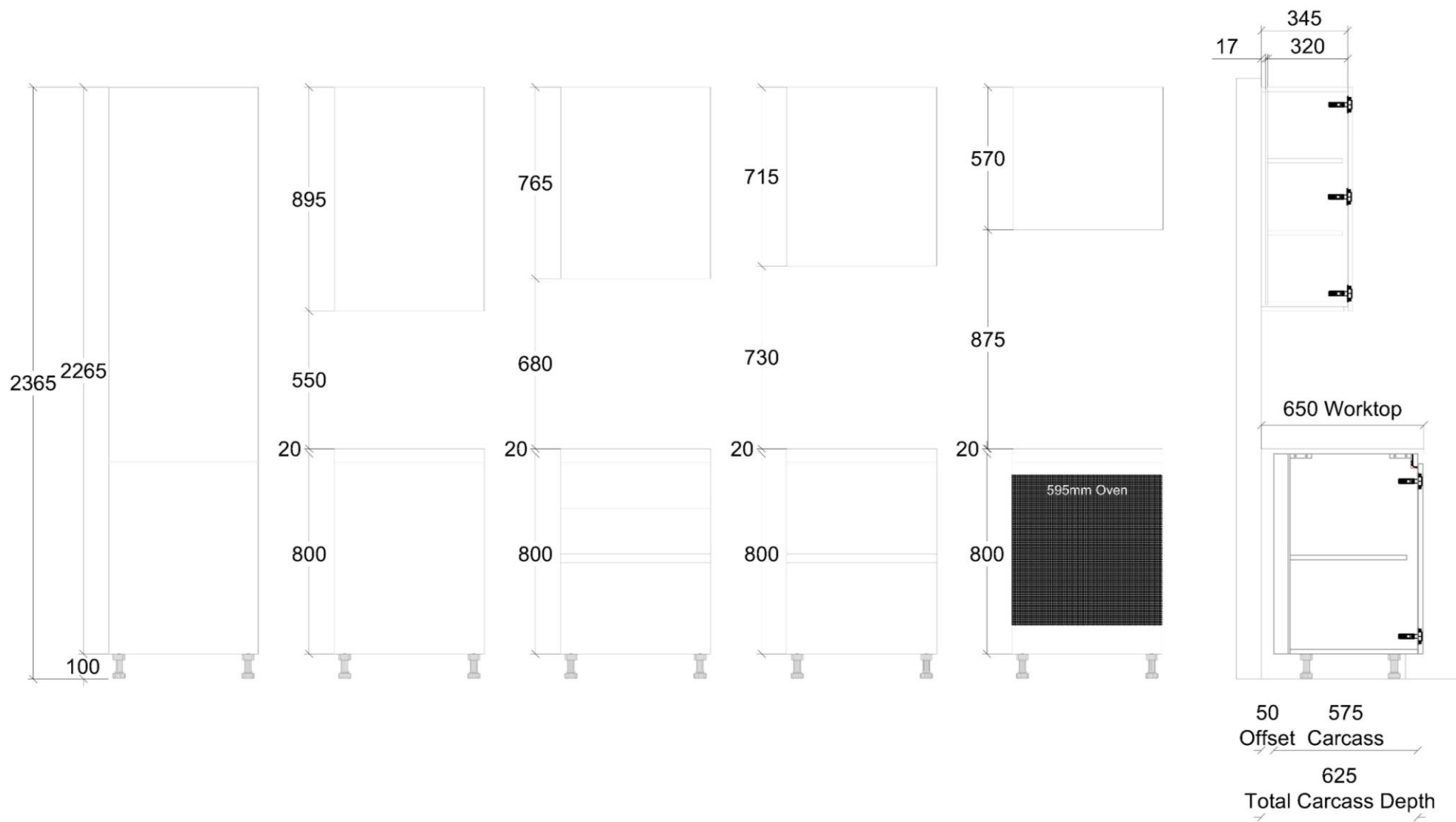
# Med height

## Handless



# Tall height

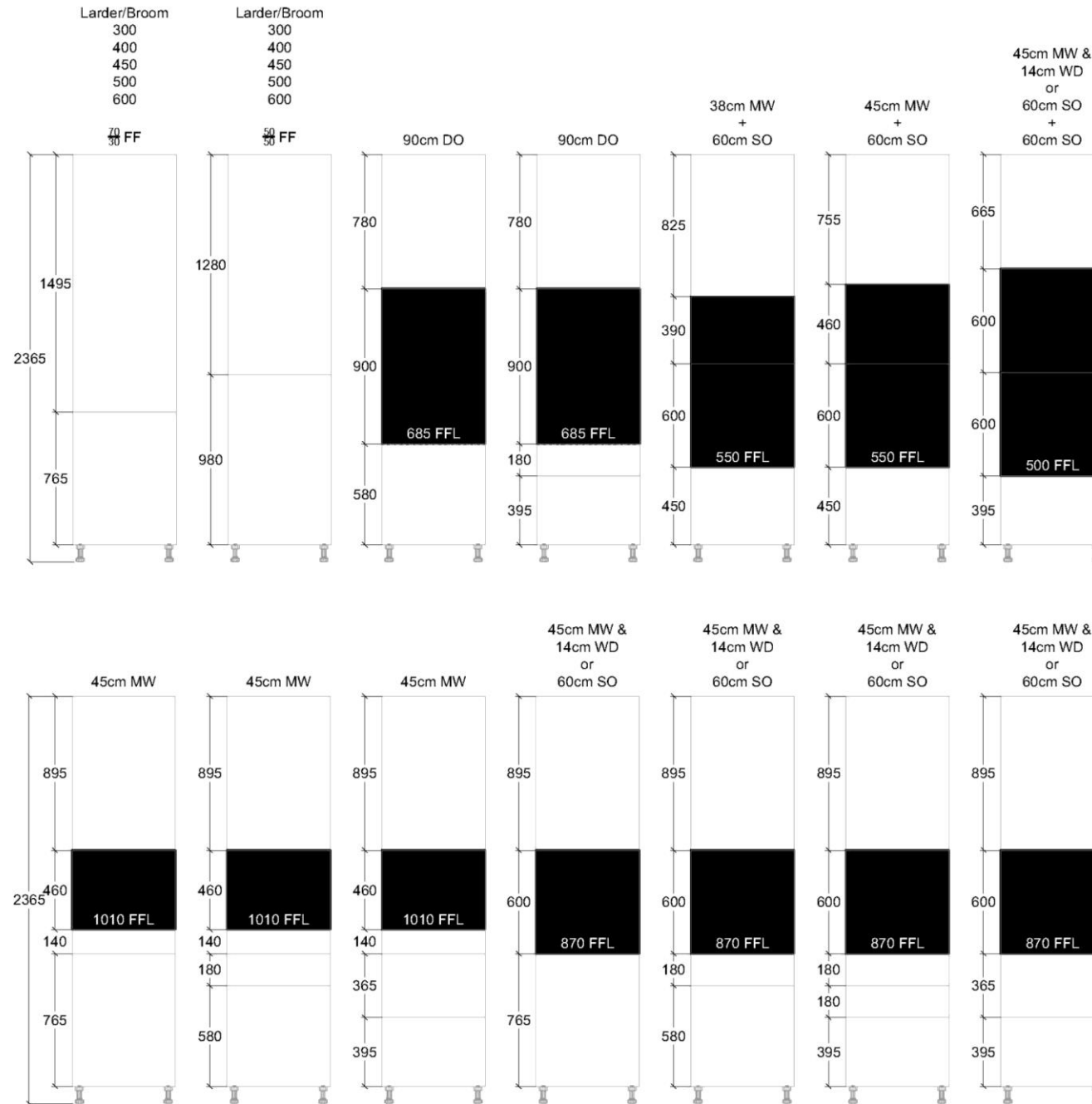
## Handless





# Tall height

## Handless



Technical drawing of a kitchen unit showing front, side, and rear views with dimensions.

**Front View Dimensions:**

- Overall height: 2295
- Overall width: 2145
- Base width: 150
- Upper section height: 895
- Lower section height: 490
- Lower section depth: 40
- Lower section internal height: 720

**Side View Dimensions:**

- Upper section height: 715
- Lower section height: 670
- Lower section depth: 40
- Lower section internal height: 720
- Base width: 150

**Rear View Dimensions:**

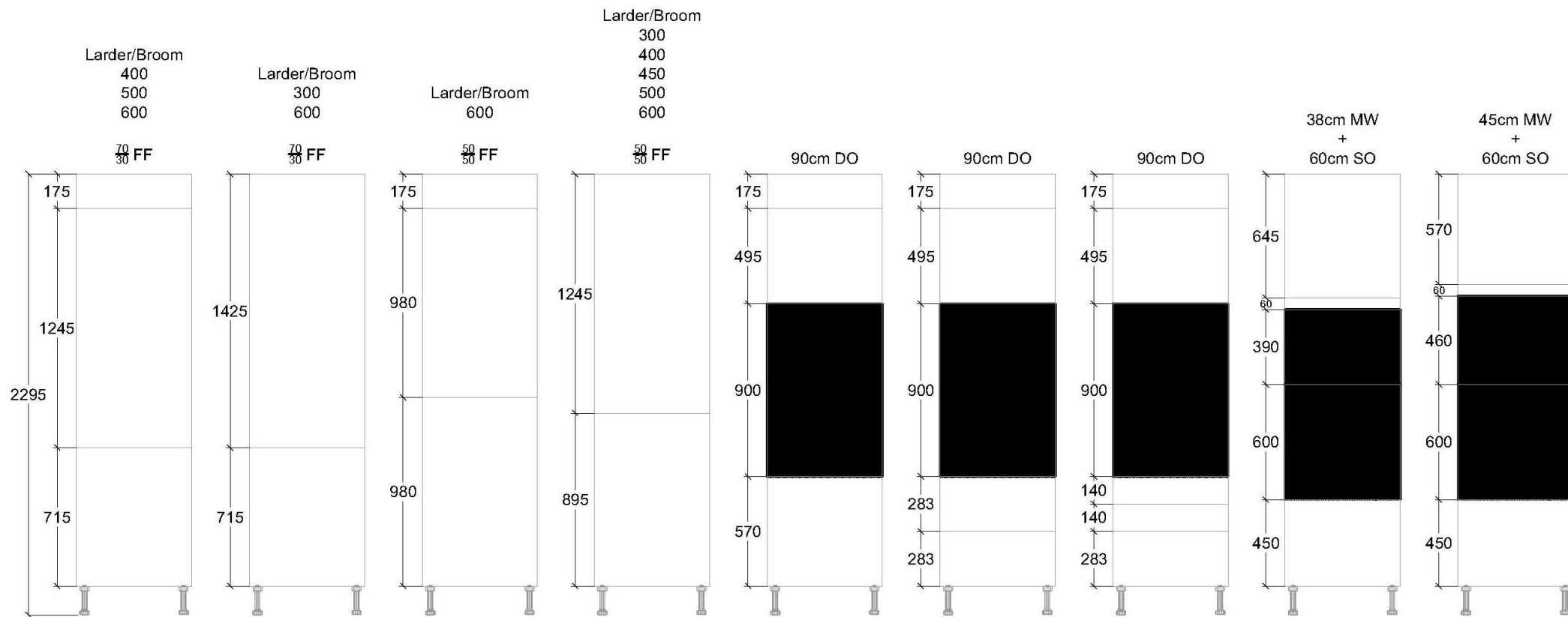
- Upper section height: 570
- Lower section height: 815
- Lower section depth: 40
- Lower section internal height: 720
- Base width: 150
- Feature: 595mm Oven

**Internal View Dimensions:**

- Overall height: 345
- Interior height: 320
- Worktop width: 650
- Offset: 50
- Carcass width: 575
- Total Carcass Depth: 625

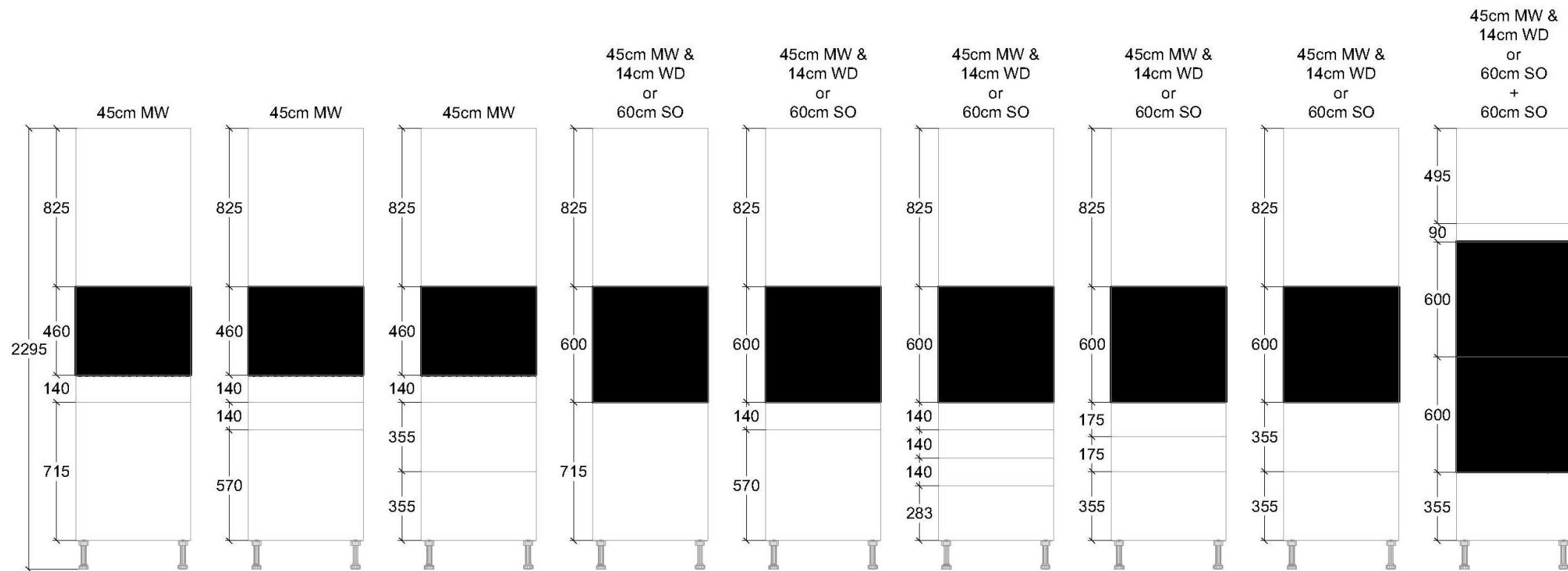
# Tall height

## Standard handled



# Tall height

## Standard handled







our moods...





The kitchen is the centre of a home; not just a place for eating, but also a place to gather and tell stories, share memories and reflect on life's adventures; and at Commodore Kitchens, we are fully aware of how important this room is; we have, after all, been making beautiful kitchens since 1972.

Each brief is truly individual and our UK manufactured kitchen ranges start with a designer's vision to provide you, our client, with a fusion of contemporary design, practicality and uniqueness. Each product in our range has been subjected to the most intense scrutiny to ensure that it meets our exacting standards for quality, innovation and visual impact.

Our Mood Boards then set the context for colour, texture and room setting. This is a key part of the process and we have been using this methodology for over twenty years.

Our in-house design team have over two hundred cumulative years of experience and will work in lock step with you to fulfil your design brief and give you a perfect blend of innovation and colour whilst achieving your budget.

Our state of the art showroom showcases our design and manufacturing expertise and will provide additional inspiration as you select your ranges.



the team...





CKL

A black and white photograph of a building's exterior corner. A dark, rectangular sign is mounted on the wall, featuring the CKL logo and the word 'commodore' in a serif font. Below 'commodore' is a horizontal line, and underneath that line, the words 'design create install' are written in a smaller, sans-serif font. The building's roofline is visible at the top, and the sky is in the background.

commodore

---

design create install

# Your team

Commodore design have a wealth of experience through all departments, including our sales team.

The uniqueness of your project demand a partner who can work with you and help you get to the answers on design, budget and safe delivery of your project. The Sales Team at Commodore Design all have the necessary contract kitchen experience to help you on that journey.

This starts with the head of the department and Matt Hollis has been in the sector for over twenty years.

Likewise, Matt's team are all highly experienced in the sector and are trained to listen and understand your requirements and more importantly, help support you in getting to your solution.

Matthew.Hollis@commodoredesign.com  
Tel no. 07810 527783

Steve.Northwood@commodoredesign.com  
Tel no. 07581 571782

Joel.Ivory@commodoredesign.com  
Tel no. 07436 799147

Tara.Smith@commodoredesign.com  
Tel no. 07721 572402



Key Account Manager  
**Tara  
Lee Smith**



Key Account Manager  
**Steve  
Northwood**



Key Account Manager  
**Joel  
Ivory**



Sales Director  
**Matt Hollis**



range analysis...



# Range analysis

% Approximate uplift from lower price group

% Approximate decrease from higher group

	0	1	2	3	4	5
0		8%	13%	15%	26%	37%
1	-7%		4%	7%	17%	27%
2	-11%	-4%		3%	12%	22%
3	-13%	-6%	-2%		9%	17%
4	-21%	-14%	-11%	-8%		8%
5	-27%	-21%	-18%	-16%	-8%	





our accreditations...







